

Overview



SIWAREX WP321 is a versatile and flexible weighing module for the seamless integration of a static scale into the SIMATIC automation environment.

The electronic weighing system is integrated in the SIMATIC ET 200SP series and uses all the features of a modern automation system, such as integrated communication, operator control and monitoring, diagnostic system and configuration tools in the TIA Portal, SIMATIC STEP 7, WinCC flexible and PCS7.

Benefits

The electronic weighing system described here is characterized by decisive advantages:

- Uniform design technology and consistent communication in SIMATIC ET 200SP
- Compact design with only 15 mm module width
- Parameterization of the scales via the control panel, CPU or PC
- Flexible configuration options in SIMATIC TIA Portal, SIMATIC STEP 7 and PCS7
- Measuring of weights and forces with a resolution of up to +/- 2 million parts
- 100 Hz / 120 Hz / 600 Hz measurement rate
- Internal scale monitoring of freely definable limit values
- Easy commissioning using the "SIWATOOL" software
- Automatic calibration without the need for calibration weights
- Modules can be replaced without recalibrating the scale
- Direct use in ATEX Zone 2 possible
- Wide range of status and diagnostic information
- "Ready-for-use" sample program

Application

SIWAREX WP321 is the optimum solution wherever analog load cells are used for measuring tasks.

The SIWAREX WP321 is suitable for the following applications:

- Non-automatic weighing instrument (NAWI), e.g. platform and hopper scales
- Fill-level monitoring of silos and hoppers
- Measuring of crane and cable loads
- Force measurements
- Monitoring of belt tensions
- Setup of scales in hazardous areas

Design

SIWAREX WP321 is a technology module (TM) of the SIMATIC ET 200SP series and is thus linked to the controller in a distributed manner by means of an ET 200SP interface module (Profibus/Profinet).

The following BaseUnits (Type A0) can be used for integration:

For opening a new potential group:

BU15P-16+A10+2D (6ES7193-6BP20-0DA0)

BU15P-16+A0+2D (6ES7193-6BP00-0DA0)

For continuing the potential group:

BU15P-16+A10+2B (6ES7193-6BP20-0BA0)

BU15P-16+A0+2B (6ES7193-6BP00-0BA0)

The load cells or force sensors are connected to the terminals of the BaseUnit. This means that modules can be replaced quickly, easily and without any wiring work.

Weighing Electronics

SIWAREX weighing electronics for SIMATIC
Platform/hopper scale

SIWAREX WP321

Function

The primary task of the weighing electronics is to determine the current weight and force values on the basis of the signals supplied by the connected sensors. Thanks to the seamless integration into the SIMATIC environment, values can be processed directly and in any available programming language of the CPU. If the freely selectable and internally monitored values are exceeded or undershot, this is reported directly to the controller. A variety of status and diagnostic information can also be read out and evaluated in the CPU without difficulty.

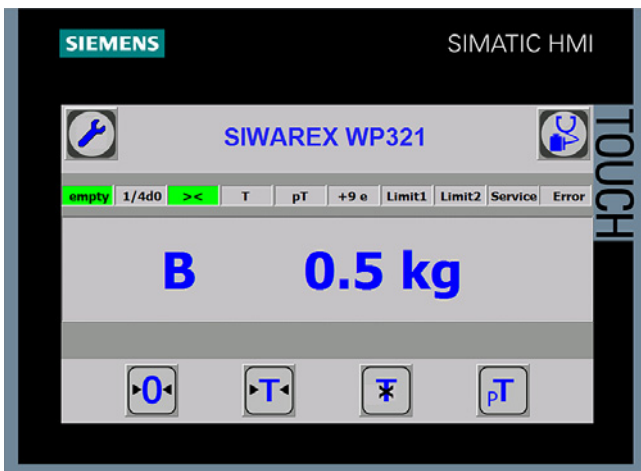
The SIWAREX WP321 is calibrated in the factory. This not only permits automatic calibration of the scales (without the need for calibration weights), but also the replacement of modules without the need for recalibration.

Via the integral RS 485 port, a PC can be connected for setting the parameters of the weighing electronics using the "SIWATOOL" software. A USB RS 485 interface converter is required for this purpose.

Thanks to its seamless integration into the SIMATIC environment, the use of SIWAREX weighing electronics requires no complicated or expensive communication drivers for the scales.

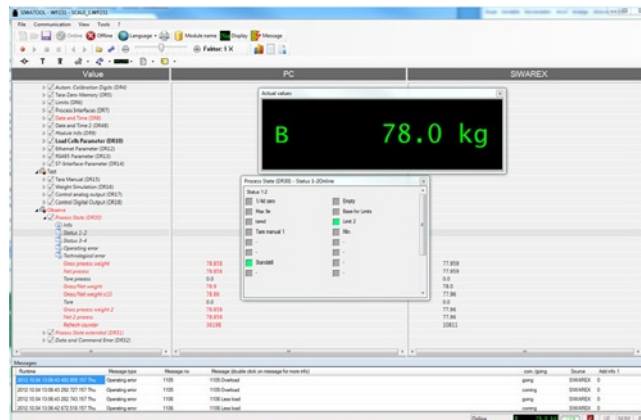
Programmable weighing applications tailored to any situation can be created and then adapted or extended at any time in combination with the functionalities of the TIA Portal and of the SIMATIC Manager and WinCC flexible.

Likewise, WP321 enables scales to be set up in hazardous areas. Depending on the zone and the load cells used, the use of the SIWAREX IS Ex interface may also be necessary.



SIWAREX WP321 Ready for use

For an easy introduction to the integration of the module into the TIA Portal and SIMATIC Manager, a "Ready for use" sample project is available free of charge. This project demonstrates the integration of the module into the hardware configuration and contains the function block for communication between the CPU and SIWAREX. It also contains a ready-made data block that contains all the parameters for the scales. The "Ready for use" project is rounded off with a touch panel configuration feature, which not only permits complete commissioning of the scales from the panel, but also includes an "operator view" that can be used as an example for the normal operation of the scales.



SIWAREX WP321 SIWATOOL

SIWATOOL is a service software tool which enables you to calibrate the module quickly and efficiently on site, set or reset parameters, or perform diagnostics in the event of a fault. Furthermore, complete backup files can be created for the scales, which can be uploaded to a new module with a few mouse clicks, so that the module continues to operate exactly as it did before the backup, without the need for any recalibration. It is even possible to upload configuration files that were created off-line, or to read out the error buffer. No special SIMATIC knowledge is required to use SIWATOOL. It is connected via the RS 485 port of the module which requires the use of a USB RS 485 interface converter. Please refer to the WP321 manual for further recommendations.

Technical specifications

SIWAREX WP321	
Integration in automation systems	
SIMATIC S7-300, S7-400, S7-1200 and S7-1500	Via SIMATIC ET 200SP interface module (PROFIBUS or PROFINET)
Other manufacturers (with restrictions)	Via SIMATIC ET 200SP interface module (PROFIBUS or PROFINET)
Communication interfaces	<ul style="list-style-type: none"> SIMATIC ET 200SP backplane bus RS 485 (SIWATOOL, Siebert remote display)
Commissioning options	<ul style="list-style-type: none"> Using SIWATOOL V7 Using function block in SIMATIC CPU / Touch Panel
Measuring accuracy	
according to DIN 1319-1 of full-scale value at 20 °C ± 10 K (68 °F ± 10 K)	0.05%
Internal resolution	± 2 million parts
Measuring frequency	100 / 120 / 600 Hz
Digital filter	Variable adjustable low-pass and average filter
Typical applications	<ul style="list-style-type: none"> Non-automatic weighing instruments Force measurements Fill-level monitoring Belt tension monitors
Weighing functions	
Weight values	<ul style="list-style-type: none"> Gross Net Tare
Limit values	<ul style="list-style-type: none"> 2 x min/max Empty
Zeroing	Via command by controller or HMI
Tare	Via command by controller or HMI
External tare specification	Via command by controller or HMI
Calibration commands	Via command by controller or HMI

SIWAREX WP321	
Load cells	Full-bridge strain gauges in 4-wire or 6-wire system
Load cell powering	
Supply voltage (value applies at sensor, cable-related voltage drops of up to 5 V are controlled)	4.85 V DC ±2%
Permissible load resistance	
<ul style="list-style-type: none"> R_{Lmin} R_{Lmax} 	> 40 Ω < 4100 Ω
With SIWAREX IS Ex interface	
<ul style="list-style-type: none"> R_{Lmin} R_{Lmax} 	> 50 Ω < 4100 Ω
Load cell characteristic	1 ... 4 mV/V
Permissible range of measuring signal (at greatest set characteristic value)	-21.3 ... +21.3 mV
Max. distance of load cells	1000 m (459.32 ft)
Connection to load cells in Ex zone 1	Optionally via SIWAREX IS Ex interface (compatibility of the load cells must be checked)
Approvals/certificates	<ul style="list-style-type: none"> ATEX Zone 2 UL FM EAC KCC IECEX RCM
Auxiliary power supply	
Rated voltage	24 V DC
Max. power consumption	typ. 0.1 A @ 24 V DC (0.2 A max.)
Max. power consumption SIMATIC Bus	30 mA
IP degree of protection according to DIN EN 60529; IEC 60529	IP20
Climatic requirements	
$T_{min(IND)} \dots T_{max(IND)}$ (operating temperature)	
<ul style="list-style-type: none"> Vertical installation in SIMATIC S7 ¹⁾ Horizontal installation in SIMATIC S7 ¹⁾ 	-25 ... +50 °C (-13 ... 122 °F) -25 ... +60 °C (-13 ... 140 °F)
EMC requirements	according to IEC 61000-6-2, IEC 61000-6-4, OIML-R76-1
Dimensions (width)	15 mm (0.6 in)

¹⁾ The S7 standard modules may not be operated at temperatures below 0 °C (32 °F). For operating conditions below 0 °C (32 °F), SIMATIC modules from the SIPLUS series must be used.

Weighing Electronics

SIWAREX weighing electronics for SIMATIC
Platform/hopper scale

SIWAREX WP321

Selection and ordering data

	Article No.		Article No.
Weighing module TM SIWAREX WP321 Single-channel, for platform or hopper scales with analog load cells (1–4 mV/V), 1 x LC, 1 x RS 485.	7MH4138-6AA00-0BA0	SIWAREX JB junction box, stainless steel housing (ATEX) For parallel connection of up to 4 load cells (for zone allocation, see manual or type-examination certificate).	7MH4710-1EA01
SIWAREX WP321 manual Available in a range of languages Free download on the Internet at: http://www.siemens.com/weighing/documentation		Ex interface SIWAREX IS For intrinsically-safe connection of load cells. With ATEX approval (not UL/FM). Suitable for SIWAREX electronic weighing system. Compatibility of load cells must be checked. Approved for use in the EU <ul style="list-style-type: none"> • Short-circuit current < 199 mA DC • Short-circuit current < 137 mA DC 	
SIWAREX WP321 "Ready for Use" TIA Portal and SIMATIC Manager sample configuration Free download on the Internet at: http://www.siemens.com/weighing/documentation		7MH4710-5BA 7MH4710-5CA	
SIWATOOL V4 & V7 Service and commissioning software for SIWAREX weighing modules	7MH4900-1AK01	Cable (optional) Cable Li2Y 1 x 2 x 0.75 ST + 2 x (2 x 0.34 ST) – CY For connecting SIWAREX electronic weighing systems to junction box (JB), extension box (EB) and Ex interface or between two JBs. For permanent installation. Occasional bending is possible. External diameter: approx. 10.8 mm (0.43 in) Permissible ambient temperature -40 ... +80 °C (-40 ... +176 °F). Sold by the meter. <ul style="list-style-type: none"> • Sheath color: orange • For potentially explosive atmospheres. Sheath color: blue. 	
SIWAREX PCS7 AddOn Library for PCS7 V8.x and V9.0 <ul style="list-style-type: none"> • Support of Profinet APL faceplates and function block for: • SIWAREX U • SIWAREX FTA • SIWAREX FTC_B (belt scale) • SIWAREX WP321 Classic faceplate and function block for: <ul style="list-style-type: none"> • SIWAREX FTC_L (Loss in weight) 	7MH4900-1AK61	7MH4702-8AG 7MH4702-8AF	
Accessories (mandatory requirement) BaseUnit (Type A0 – one BaseUnit required for each WP321) <ul style="list-style-type: none"> • For opening a new potential group <ul style="list-style-type: none"> - BU15P-16+A0+2D or - BU15P-16+A10+2D • For continuing the potential group <ul style="list-style-type: none"> - BU15P-16+A0+2B - BU15P-16+A10+2B 	6ES7193-6BP00-0DA0 6ES7193-6BP20-0DA0 6ES7193-6BP00-0BA0 6ES7193-6BP20-0BA0	RS 485/USB interface converter Commercially available interface converter with FTDI chip, e.g. USB-Nano from CTI http://www.cti-shop.com/RS485-Konverter/USB-Nano-485	
Shielded connection for BaseUnit (5 units / for 5 scales) For laying the load cell cable	6ES7193-6SC00-1AM0	Remote display The Siebert S102 and S302 remote digital displays can be directly connected to the SIWAREX FTA via an RS 485 interface. Siebert Industrieelektronik GmbH Postfach 1180D-65565 Eppelborn, Germany Tel.: +49 6806/980-9 Fax: +49 6806/980-999 Internet: http://www.siebert-group.com/en Detailed information is available from the manufacturer.	
Accessories (optional) SIWAREX JB junction box, aluminum housing For connecting up to 4 load cells in parallel, and for connecting multiple junction boxes.	7MH4710-1BA		
SIWAREX JB junction box, stainless steel housing For connecting up to 4 load cells in parallel.	7MH4710-1EA		

Selection and ordering data

Article No.

*Commissioning***Commissioning charge for one static scale with SIWAREX module****9LA1110-8SN50-0AA0**

(Travel and setup charge must be ordered separately)

Scope:

- Recording of data
- Checking of mechanical installation of the scale
- Checking of electrical wiring and function
- Static adjustment of the scale

Requirements:

- Mechanical design functional
- Modules electrically wired and tested
- Adjustment weights available
- Free access to scale

Flat charge for travel and setup in Germany**9LA1110-8RA10-0AA0**